



Synaptophysin (ABT533) Mouse mAb

Catalog No	YP-Ab-15211
Isotype	IgG
Reactivity	Human;Mouse;Rat
Applications	IHC;WB;
Gene Name	SYP
Protein Name	Major synaptic vesicle protein p38;MRX96;MRXSYP;Syn p38;Synaptophysin;Syp;SYPH;SYPH_HUMAN;SypI
Immunogen	Synthesized peptide derived from human Synaptophysin
Specificity	The antibody can specifically recognize human Synaptophysin protein.
Formulation	PBS, pH7.2, 0.03% Porcolin 300, containing stabilizing protein
Source	Mouse, Monoclonal/IgG1, Kappa
Purification	The antibody was affinity-purified from mouse ascites by affinity-chromatography using specific immunogen.
Dilution	IHC-p 1:200-400, WB 1:200-1000,
Concentration	1 mg/ml
Purity	≥90%
Storage Stability	-20°C/1 year
Synonyms	Major synaptic vesicle protein p38;MRX96;MRXSYP;Syn p38;Synaptophysin;Syp;SYPH;SYPH_HUMAN;SypI
Observed Band	
Cell Pathway	Cytoplasmic
Tissue Specificity	Pancreas/ Colon
Function	domain:The calcium-binding activity is thought to be localized in the cytoplasmic tail of the protein.,function:Possibly involved in structural functions as organizing other membrane components or in targeting the vesicles to the plasma membrane.,online information:Synaptophysin entry,PTM:Ubiquitinated; mediated by SIAH1 or SIAH2 and leading to its subsequent proteasomal degradation.,similarity:Belongs to the synaptophysin/synaptobrevin family.,similarity:Contains 1 MARVEL domain.,subunit:Homo-hexamers or homotetramers.,tissue specificity:Characteristic of a type of small (30-80 nm) neurosecretory vesicles, including presynaptic vesicles, but also vesicles of various neuroendocrine cells of both neuronal and epithelial phenotype.,
Background	This gene encodes an integral membrane protein of small synaptic vesicles in brain and endocrine cells. The protein also binds cholesterol and is thought to direct targeting of vesicle-associated membrane protein 2 (synaptobrevin) to intracellular compartments. Mutations in this gene are associated with X-linked

mental retardation (XLMR). [provided by RefSeq, Aug 2011],

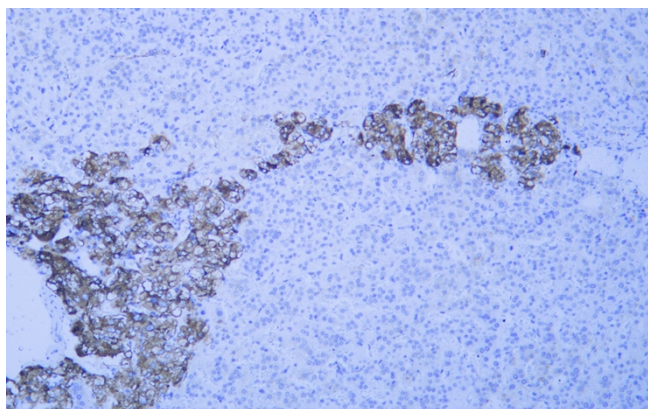
matters needing attention

Avoid repeated freezing and thawing!

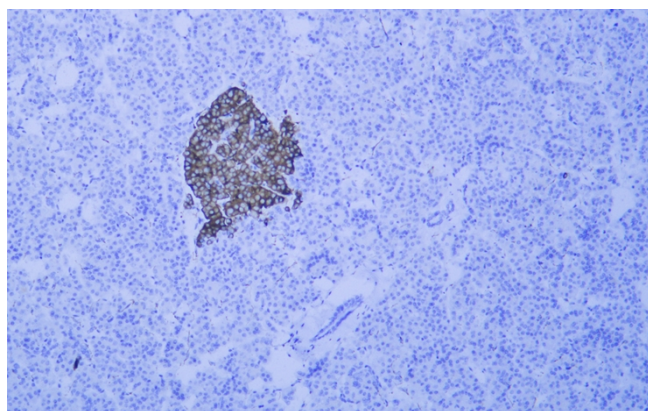
Usage suggestions

This product can be used in immunological reaction related experiments. For more information, please consult technical personnel.

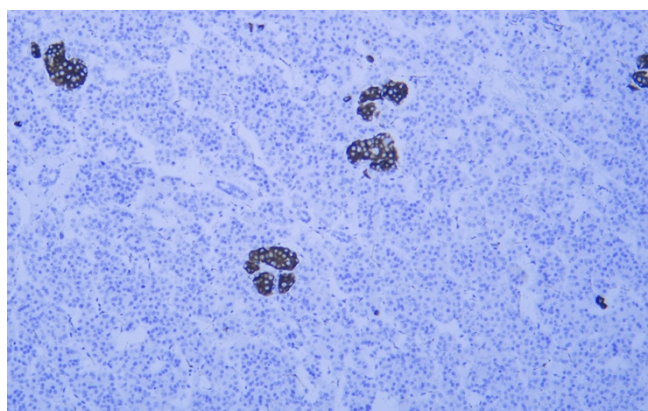
Products Images



Human adrenal gland tissue was stained with Anti-Synaptophysin (ABT533) Antibody



Human pancreas tissue was stained with Anti-Synaptophysin (ABT533) Antibody



Human pancreas tissue was stained with Anti-Synaptophysin (ABT533) Antibody